



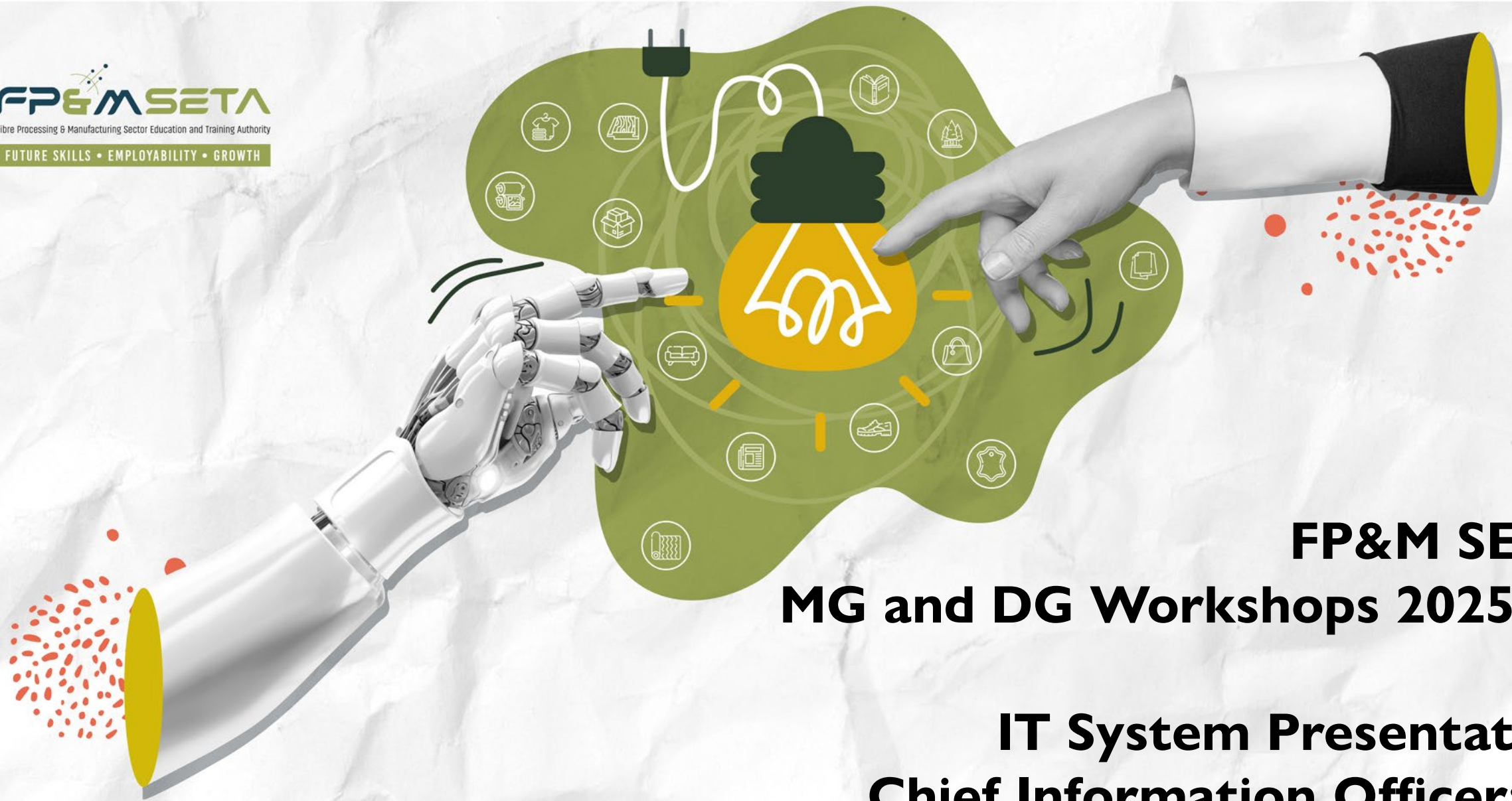
# FP&M SETA ORGANISATIONAL PRESENTATION MG/DG Stakeholder Workshops 2025/26

**FP&M SETA**

Fibre Processing & Manufacturing Sector Education and Training Authority

FUTURE SKILLS • EMPLOYABILITY • GROWTH

Funding Training for Employment



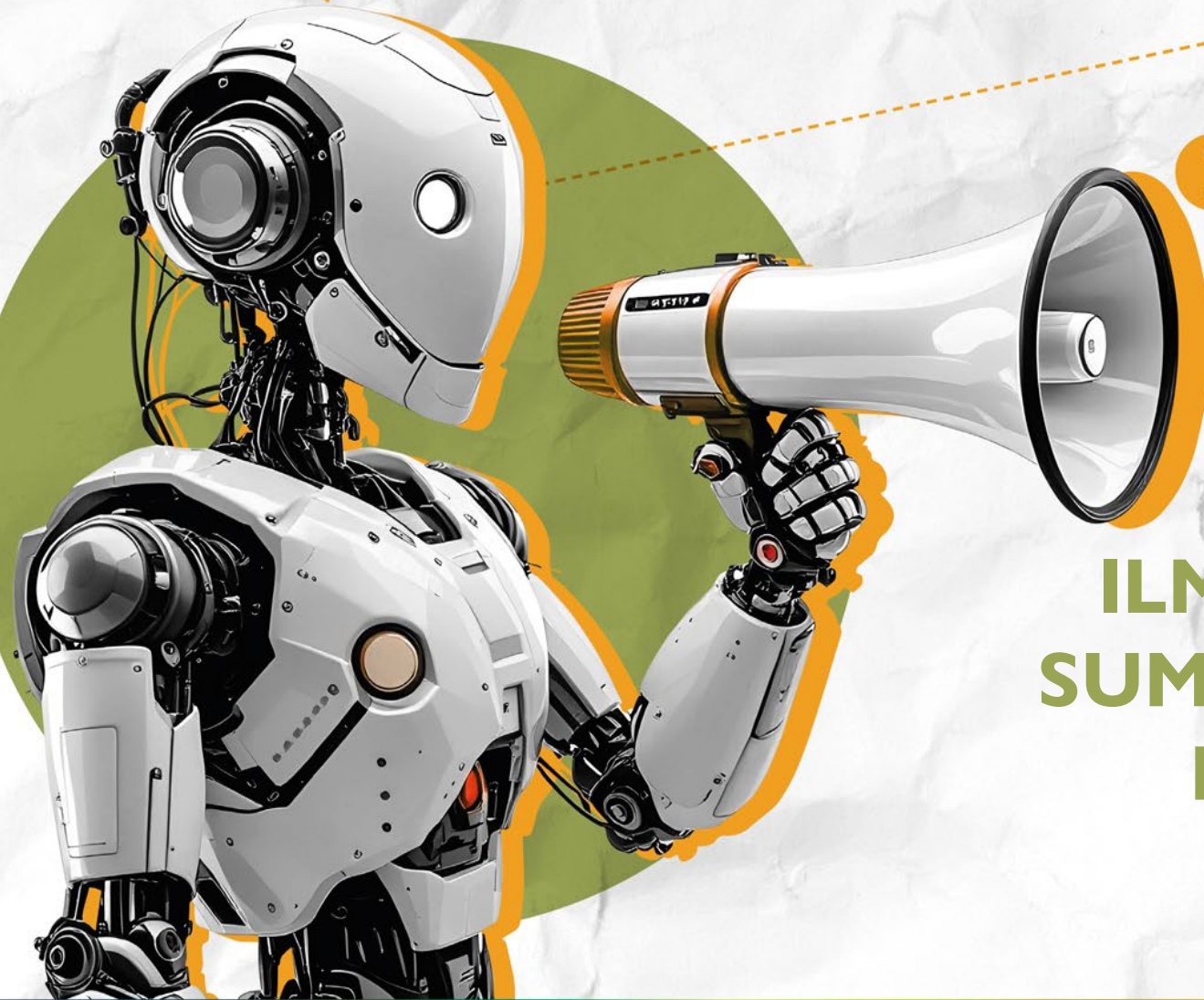
**FP&M SETA**  
**MG and DG Workshops 2025/26**

**IT System Presentation**  
**Chief Information Officer: IT**  
**Mr. Bongani Masango**



# CONTENTS

- ❑ ILMIS ENHANCEMENTS
- ❑ ILMIS SUPPORT AND DEMONSTRATION
- ❑ CAREER PORTAL BACKGROUND
- ❑ CAREER PORTAL DEMONSTRATION
- ❑ e-QUALIFICATION PORTAL DEMONSTRATION



# ILMIS ENHANCEMENTS SUMMARY, SUPPORT AND DEMONSTRATION

# ILMIS ENHANCEMENT FOR SYSTEM EFFECTIVENESS

- Enhancements Definitions
- Methodology: Agile and Dev-Ops
- How enhancements are solicited



## PROJECT MODULE ENHANCEMENT

- Commitment for absorption Percentage
- Disability selection option
- Digital Signature
- Auto-populate key information from current submissions, during a DG Application. E.g., Company details, contact information, and address.
- Single update for one profile on multiple modules

# LMIS ENHANCEMENT FOR SYSTEM EFFECTIVENESS

## SP&R MODULE ENHANCEMENT

---

Prepare submission data early and avoid last-minute information capturing

---

Training Intervention

---

Employee data

Training Planned / Implemented

---

Retrieve previous years' submission data, therefore allowing stakeholders to update information and capture less data.

---

More training and support on Excel capturing

---

Single update for one profile on multiple modules

# LMIS ENHANCEMENT FOR SYSTEM EFFECTIVENESS

## QA MODULE ENHANCEMENT

Learner Supporting document verification

Integration to Home affairs to verify learners at capturing and completion

Learners' status at completion of the program

- Employed,
- Further studies,
- Entrepreneurship,
- unemployed

Capture OFO aligned to qualification

Auto enroll learners which are verified when creating a class.

Allow multiple SDF Registration for both SETA Funded and Industry Funded


# ILIMIS LIVE DEMONSTRATION And Support

- Online Support Team through team
- Weekly training and support for Stakeholders
- User Manuals and demonstration videos
- Ticket Reference Numbers
- Support Service Rating
  - <https://fpmseta.endorseds.co.za/>

Home Login Search ▾

Dear Valued stakeholders, please click the link to get assistance with the LMIS System [Join Meeting Now](#) ✕

Welcome to Integrated LMIS, to gain Access to the System please click the link below.

[Register Now](#) 

# Career Portal



# CAREER PORTAL UPDATE

## Background, Status, and Progress

- Database of the qualified candidates \ learners
- Bridging the gap between qualified candidates and employers
- 12890 Qualified Registered candidates \ learners
- Career Portal Revamped
- Advertised Opportunities - (Extremely low and we need more for better impact)
- Continuous updating of learners and available opportunities
- Create more awareness of the portal during DG and MG workshops
- <https://www.careers-fpmseta.org.za>





# e-QUALIFICATION UPDATE

## Background, Status and Progress

- FP&M SETA has deployed a value-add e-qualifications solution that will assist stakeholders in conducting blended learning, online assessment, moderation, and content upload
- SDP can manage learners and documentation on the solution
- Registered occupational qualifications are being digitized and uploaded on the platform
- Six (6) approved Occupational Qualifications in the process of digitization
- System is accessible to unlimited
- PR company and Coms team have completed reviewing content
- <https://fpmlearning.org.za/>

# Chief Information Officer Mr. Bongani Masango – 011 403 1700

[bongnim@fpmseta.org.za](mailto:bongnim@fpmseta.org.za)

## IT SUPPORT

- **Business System Support (Career and e-Qualification Portal)**
  - Mpumelelo Mthethwa
  - 011 403 1700
  - [MpumeleloM@fpmseta.org.za](mailto:MpumeleloM@fpmseta.org.za)
- **LMIS SUPPROT**
  - - Consultants
  - 011 403 1700
  - [Helpdesk@fpmseta.org.za](mailto:Helpdesk@fpmseta.org.za)
  - Live teams support click link below  
[Join conversation](#) 

## INFRASTRUCTURE SUPPORT

- **Computer System Specialist**
  - Jan Molekwa
  - 011 403 1700
  - [JanM@fpmseta.org.za](mailto:JanM@fpmseta.org.za)
- **Durban**
- **IT Administrator**
  - Thulisile Ngubane
  - 031 702 4482
  - [ThulisileN@fpmseta.org.za](mailto:ThulisileN@fpmseta.org.za)



# THANK YOU

